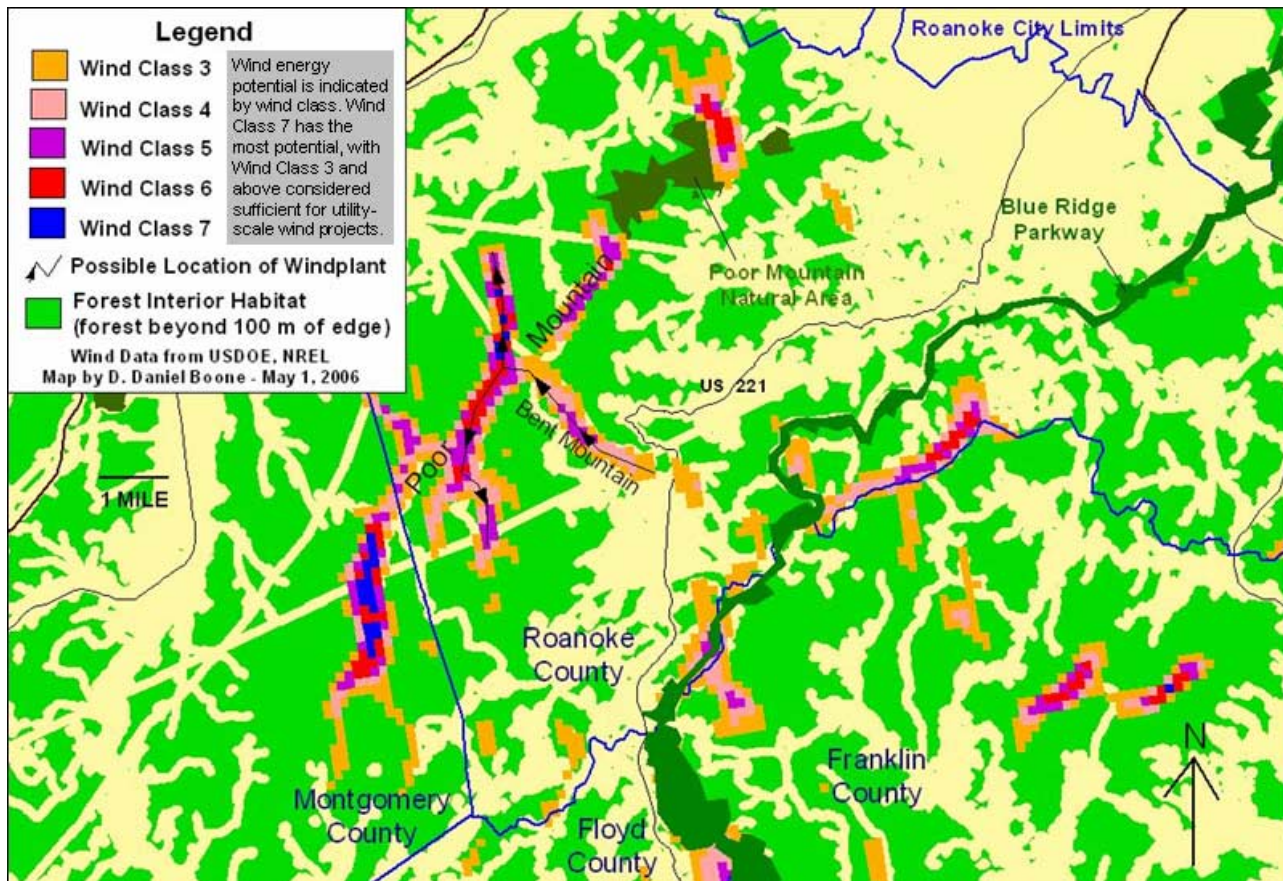


## The Bent Mountain Project

Bent Mountain in southern Roanoke County is the site for a new wind project proposal - with up to 81 MW of generating capacity. The developer, Invenergy, applied in January 2006 for an interconnection study/agreement to PJM, the company which manages the regional electricity distribution grid. See P53 in this website: <http://www.pjm.org/planning/project-queues/queue-p.jsp>.

Invenergy LLC of Chicago, is also the developer of a proposed 200 MW wind project in Greenbrier County, WV. See: <http://www.wvmcre.org/beechridge.htm> and <http://www.beechridgewind.com>.



The map above shows the possible alignment of the proposed wind project. This is based on the location of the commercially viable Class 3+ winds in the area and estimates of the number and spacing of turbines. Most of the turbines currently constructed in the Appalachian region are 1.5 MW turbines (about 400-feet tall) and the spacing is typically 8 turbines per mile.

**81 MW / 1.5 MW/turbine = 54 turbines**

**54 turbines / 8 turbines/mile = 6.75 miles**

**So the project may involve 54 turbines in an approximately 7-mile long string.**

Note that the wind turbines may cover part of the ridgecrest of Bent Mountain and then spread onto the top of Poor Mountain (which has stronger winds). The apparent location of the proposed project is between the Bent Mountain State Natural Area Preserve and the Nature Conservancy's Bottom Creek Gorge Preserve.

Additional information will be posted on the Virginia Wind website as it becomes available: see <http://www.VaWind.org>